

**Panola County Emergency Service District #1**

P.O. Box 294  
Carthage, TX 75633  
Phone: 903-693-9133

**Date:** February 24, 2024

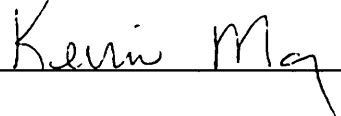
The Panola County Emergency Service District Number 1 (the "District") intends to construct a 2,000 s.f. metal building to house an expansion of the Intercommunity Fire Department. We understand that you have expressed an interest in the construction of this building.

In accordance with Section 775.025 (a) of the Texas Health & Safety Code, the District is providing Notice of this proposed construction project to you and others who have expressed a similar interest in this project. The Notice will also be published in the local newspaper in accordance with the Local Government Code requirements.

All relevant information required for newspaper publication is also required for the Notice, and is set forth in the copy of the newspaper attached here to.

We look forward to your participation in the bidding process.

Sincerely,

  
\_\_\_\_\_

NOTICE OF COMPETITIVE BIDS FOR CONSTRUCTION  
PANOLA COUNTY EMERGENCY SERVICES DISTRICT NO. 1

The Panola County Emergency Service District Number 1 (the "District") hereby gives notice to prospective bidders of its intention to construct a 2,000 square foot ("s.f.") metal building for the InterCommunity Fire Station #2, to be located at 247 FM 31 South, Panola County, Texas, 75633. This building is designed to increase the fire-protection capacities of the District for better protection of lives and property in Panola County.

Any questions on these plans Contacts: Jay Barnett, Project Manager, (318-505-7128) or Brian Murff, Panola County Fire Marshall, (903-754-1433)

COUNTY WEB SITE: [WWW.CO.PANOLA.TX.US](http://WWW.CO.PANOLA.TX.US)

NOTICE REQUIREMENTS: This notice is being published in a newspaper of general circulation in Panola County, Texas, once a week for two consecutive weeks. It is also being provided to certain prospective bidders who have previously expressed an interest in this project. All interested and qualified bidders are encouraged to participate in this bid solicitation.

BID CLOSING DATE: All bids are due in a closed sealed Envelope on or before 5:00pm April 15th, 2024. Bids turned in after this date will be disqualified.

PROJECT SPECIFICATIONS: As stated above, the project calls for the construction of a 2,000 sf. metal building at the specified location. Plans and specifications ("Bid Documents") are available at the offices of the Agent specified above or at the Panola County web site stated above. The Bid Documents have been prepared by a qualified engineer and provide for an overall design of the structure. Bidders shall have their own engineer, either one retained by such bidder or a qualified engineer for a metal building manufacturer or distributor, review, approve and stamp the documents offered by the bidder. Such submitted bid documents shall clearly and conspicuously note any modifications by the bidder's engineer to the original Bid Documents, and shall note the purpose of any improvements thereto and the approximate cost thereof. Construction documents bearing the stamp of a registered professional engineer shall be provided within 10 business days from date of award of contract.

Note: Civil Plans and all dirt including SB2 will be done by Owner.

OPENING OF BIDS: The bids shall be opened at the Panola County Convention Center Conference Room, 1702 South Adams St, Carthage, TX, 75633, at the scheduled meeting of the District's Board of Commissioners, to be held on April 16, 2024 at 7:00pm.

PRICING: Lump sum pricing shall be submitted to the Board of Commissioners, but unit pricing for any extras or modifications shall also be provided by the bidder. No performance or payment bond shall be required, but payment by the District shall be made based upon an agreed upon percentage of completion basis, with retainage withheld in accordance with the applicable statutes.

INQUIRIES: Inquiries shall be submitted in writing to the Agent named above.

INITIALLY POSTED on this the 24th day of February, 2024 with a second posting to appear in accordance with the statutory requirements.

PANOLA COUNTY EMERGENCY SERVICE  
DISTRICT NO. ONE

By:   
PRESIDENT

**Copy of plans can be obtained by contacting either Jay Barnett, 318-505-7128 or Brian Murff, 903-754-1433.**

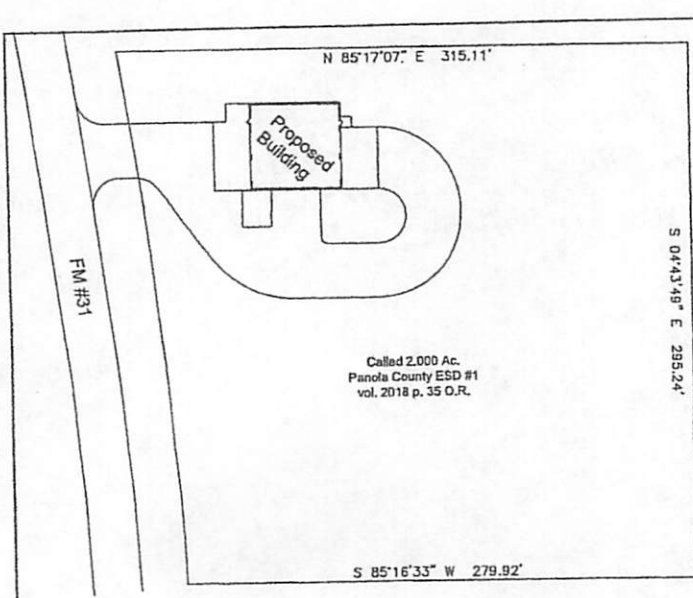
**Panola County ESD #1**

1509 West Panola Street

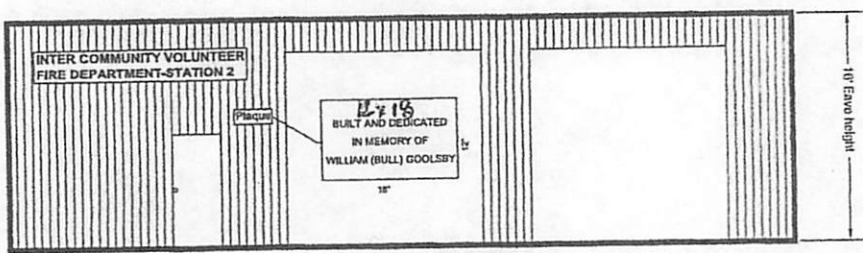
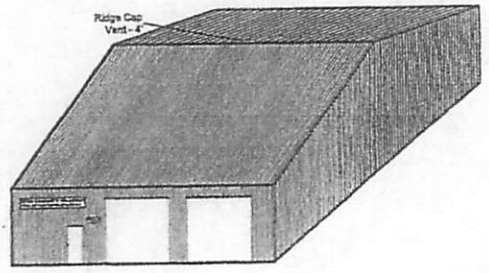
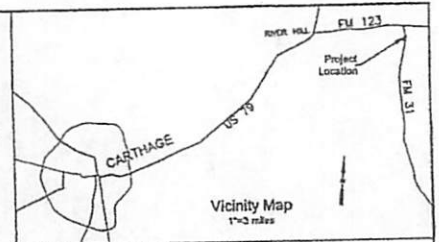
Carthage, Texas 75633

Phone (903) 693-9133

**The Panola County Emergency Service District Number 1 (the “District”) will receive the Bid Proposals by mail or in person. The Bidders can hand deliver or mail their proposals to Drew Nixon 1509 West Panola Street Carthage, Texas 75633. All Bid Proposals should be turned in on or before April 15 2024 by 5:00pm.**



- Notes:
- 1.) Plaque - reads "BUILT AND DEDICATED IN MEMORY OF WILLIAM (BULL) GOOLSBY" sign 12"x 18", letters 1" high
  - 2.) Station sign - letters 12" high
  - 3.) Overhead doors - 12x 14' insulated
  - 4.) All exterior metal sheets are to be "R" panels
  - 5.) Wall sheets are to be red in color
  - 6.) Roof sheets are to be gray in color
  - 7.) trim sheets are to be gray in color

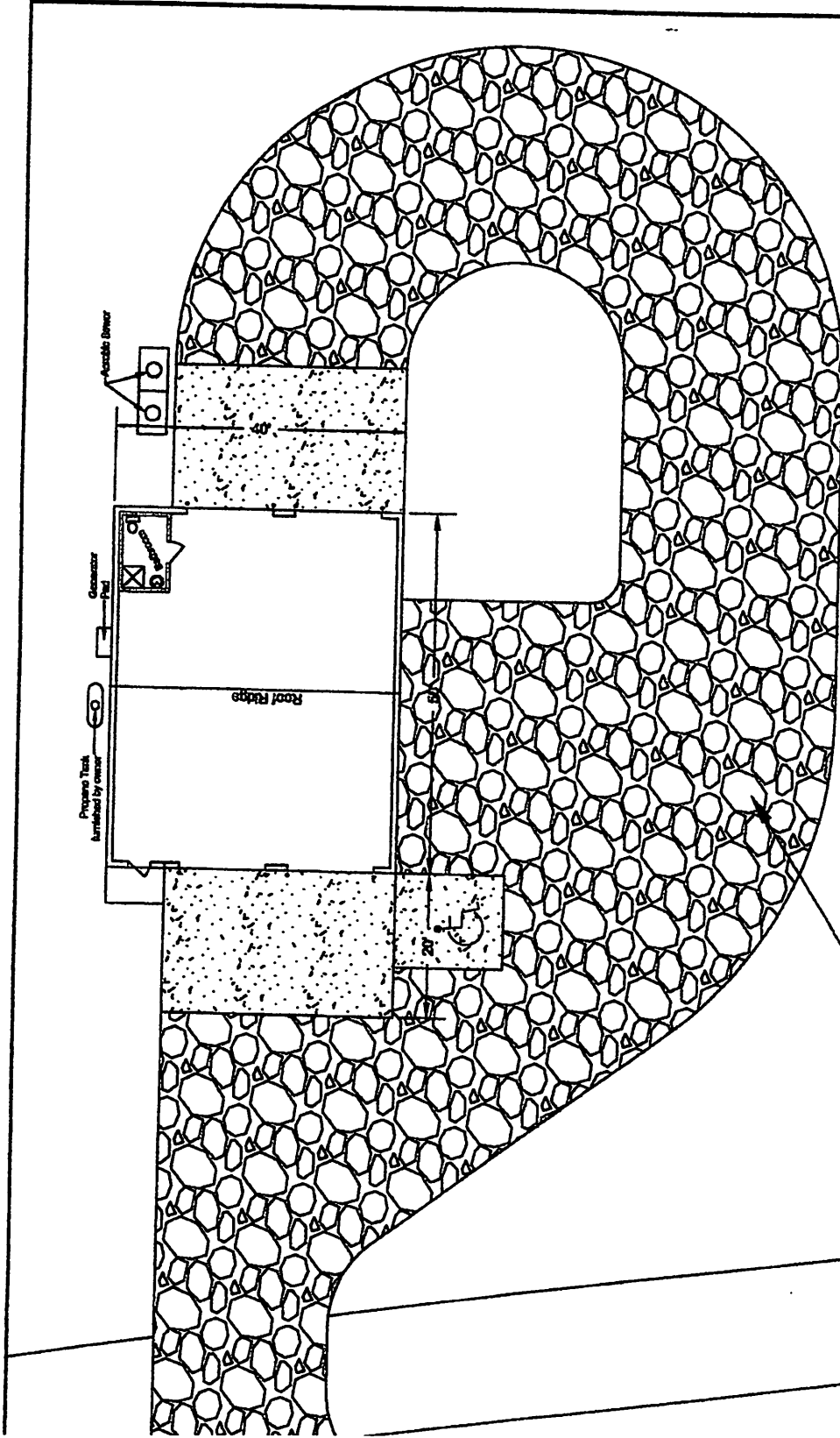


Building front detail  
N.T.S.

Index to Sheets

- Sheet 2 General Plan
- Sheet 3 Foundation Plan
- Sheet 4 Door and HVAC Details
- Sheet 5 Plumbing
- Sheet 6 Electrical

<b>INTER-COMMUNITY VOLUNTEER FIRE DEPARTMENT - STATION #2</b>		
<b>SITE PLAN</b>		
SHEET#1	DRAWN BY: JB	SCALE 1"=50'
DATE: 3/14/20	REVISED: 6/21/21	



PROPOSED GRAVEL DRIVE (SP-2) - 8568 SQ-FT

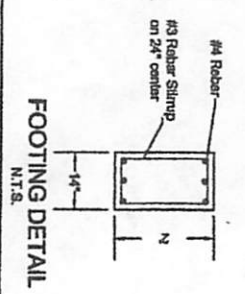
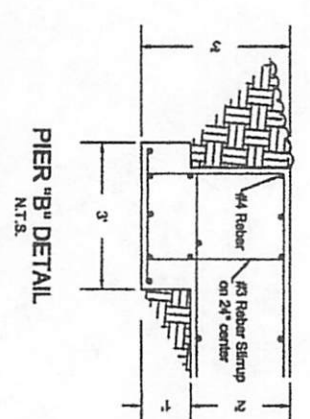
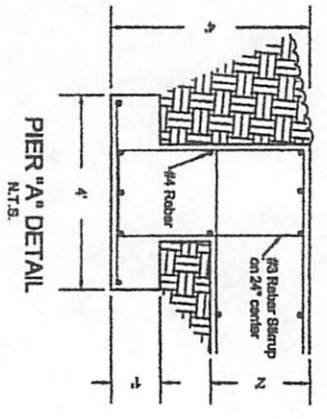
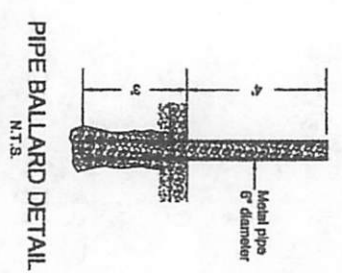
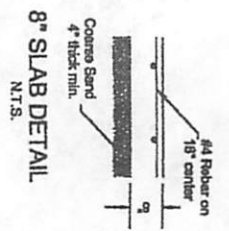
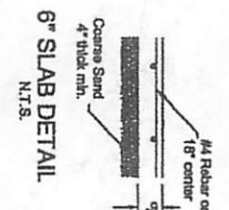
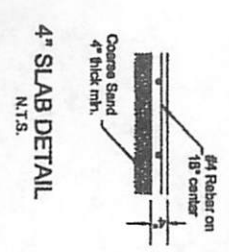
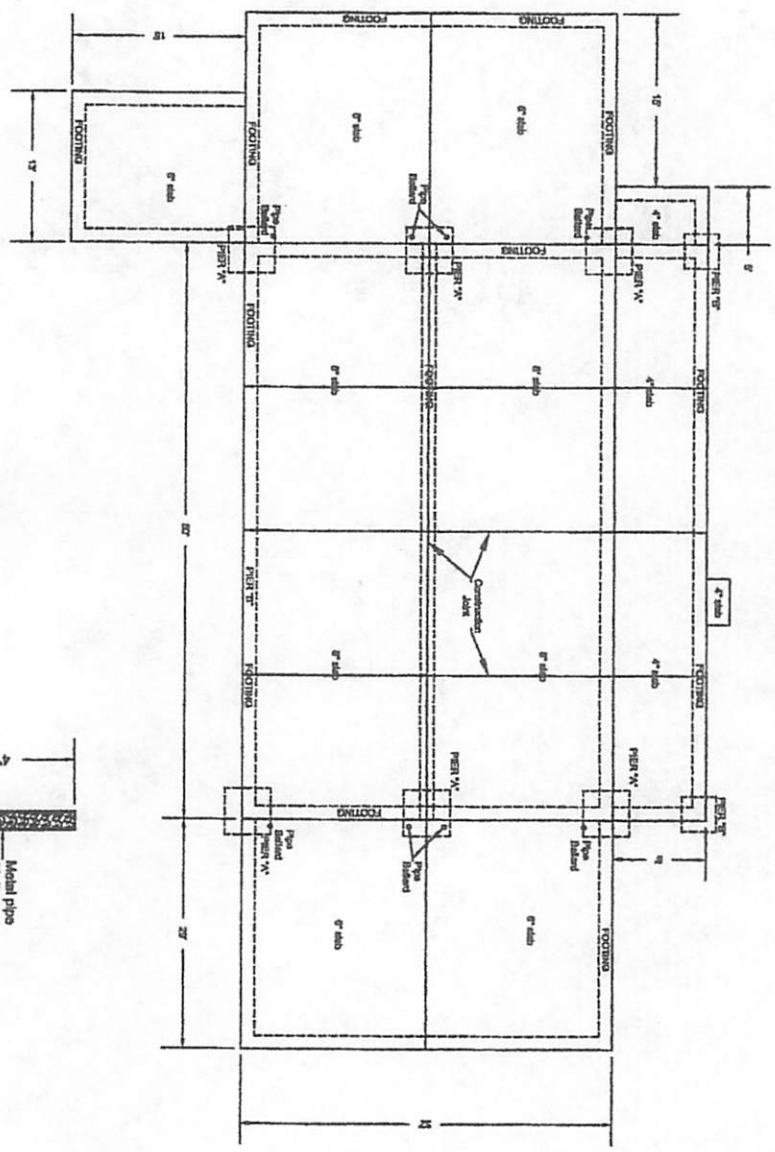
**INTER-COMMUNITY VOLUNTEER FIRE DEPARTMENT - STATION #2**

**GENERAL PLAN**

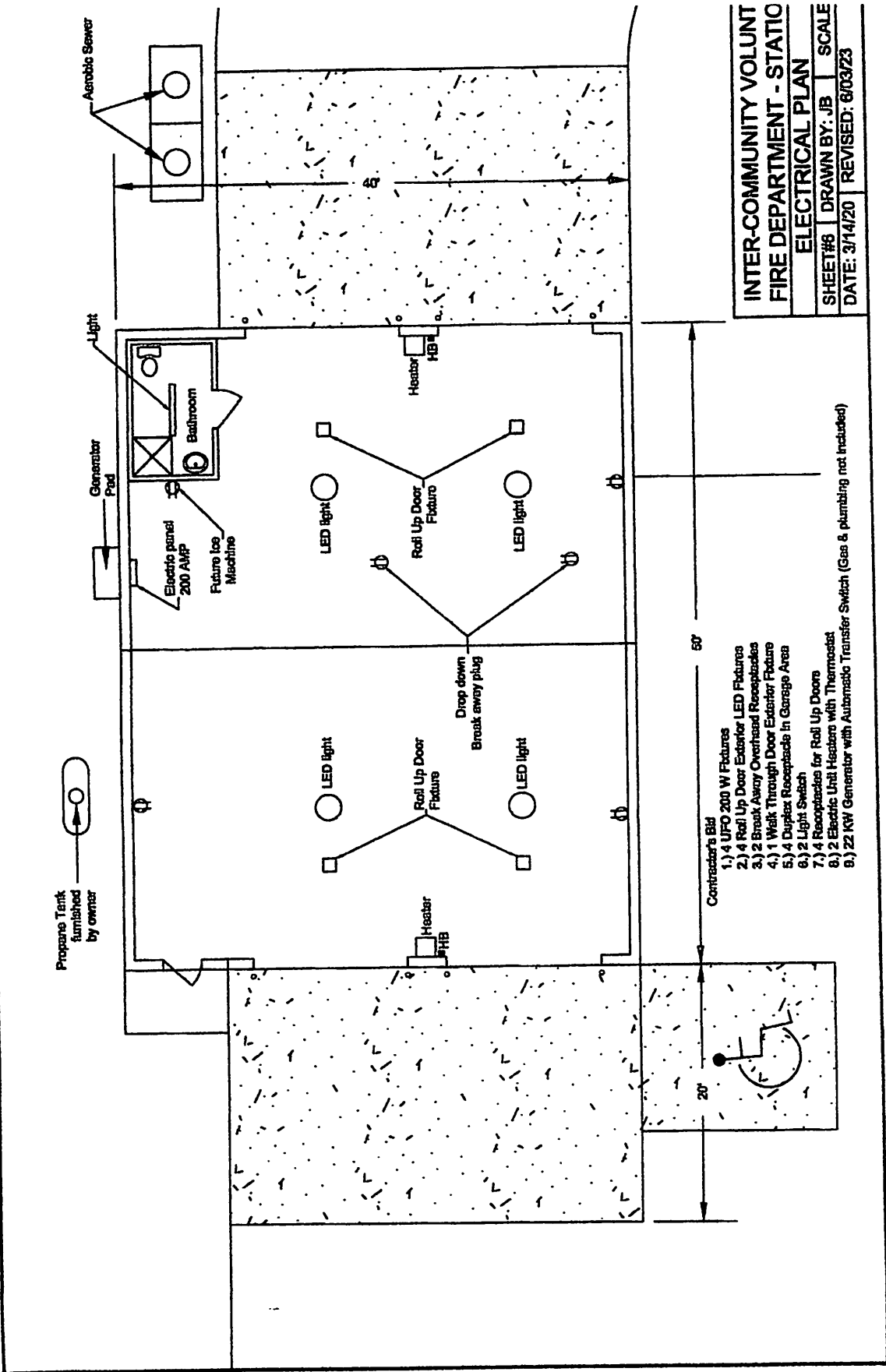
SHEET #2 | DRAWN BY: JB | SCALE: 1"=14'

DATE: 3/14/20 | REVISED: 6/04/23

- Notes:
- 1) Concrete m/c - 5 sack with 4" slump - 4'-1"
  - 2) Concrete protection against rebar - 1-1/2" min
  - 3) Pipe ballards - 7' long, 6" diameter 3' in ground filled with concrete



INTER-COMMUNITY VOLUNTEER	
FIRE DEPARTMENT - STATION #2	
FOUNDATION PLAN	
SHEET#3	DRAWN BY: JB
DATE: 3/14/20	REVISED: 6/09/23
SCALE 1"=10'	



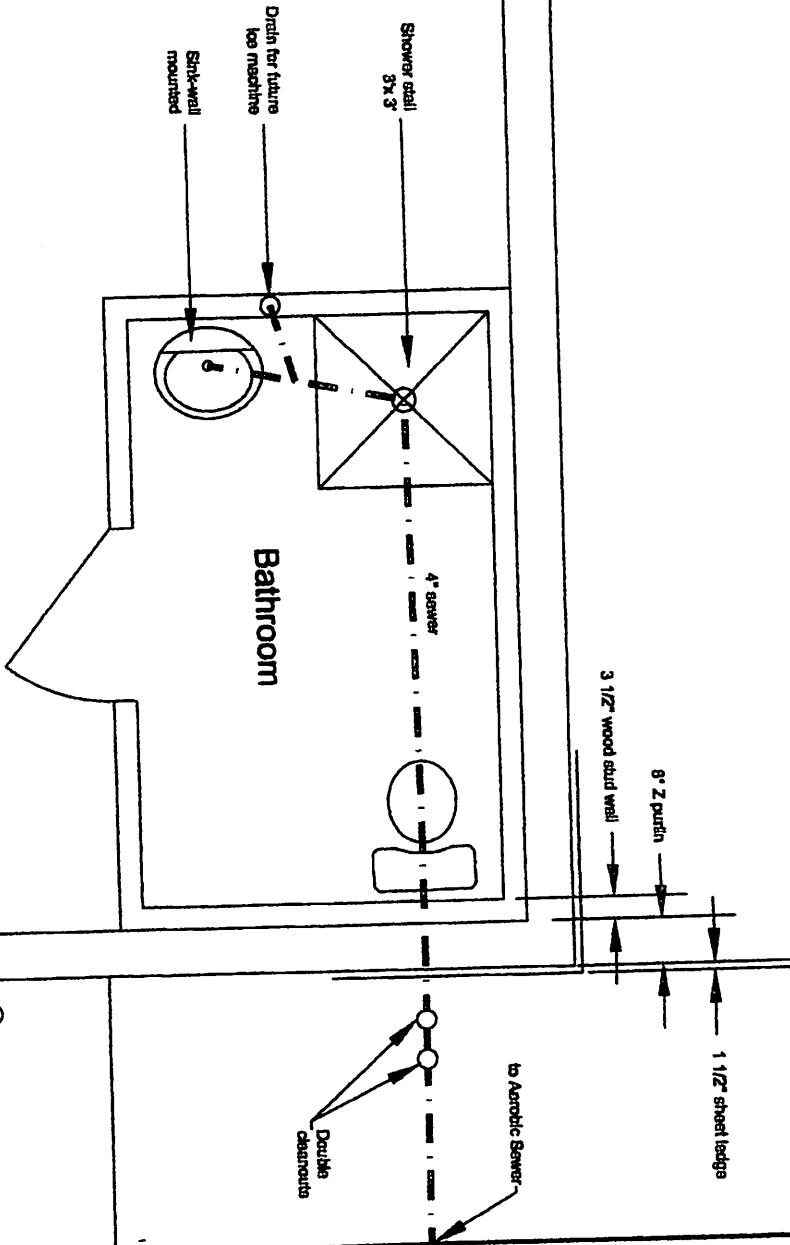
**INTER-COMMUNITY VOLUNT  
 FIRE DEPARTMENT - STATIO**  
**ELECTRICAL PLAN**  
 SHEET#6 | DRAWN BY: JB | SCALE  
 DATE: 3/14/20 | REVISED: 6/03/23

- Contractor's Bid
- 1.) 4 UFO 200 W Fixtures
  - 2.) 4 Roll Up Door Exterior LED Fixtures
  - 3.) 2 Break Away Overhead Receptacles
  - 4.) 1 Walk Through Door Exterior Fixture
  - 5.) 4 Duplex Receptacle in Garage Area
  - 6.) 2 Light Switch
  - 7.) 4 Receptacles for Roll Up Doors
  - 8.) 2 Electric Unit Heaters with Thermostat
  - 9.) 22 KW Generator with Automatic Transfer Switch (Gas & plumbing not included)

Gene Tank  
shed  
water

Gas line

Generator Pad



~~4-1-21~~  
~~Plumbing and Sanitary~~

INTERCOMMUNITY VOLUNTEER  
FIRE DEPARTMENT - STATION #2  
PLUMBING PLAN  
SHEET#5 DRAWN BY: JB SCALE 1"=2'  
DATE: 3/14/20 REVISED: 8/05/23